

ANDREW BROWNE

SUDDENLY SLOWLY

The installation *Suddenly Slowly* juxtaposes photographic notations, studies for painting, unique images and series - virtually the artist's taxonomy - to describe a greater landscape, abstracted and estranged in degrees from reality. Drawn from photographic imagery created over more than two decades, this immersive field is derived from multiple disparate and happenchance encounters with the observed world. For the artist the images - to paraphrase Marc Auge - act as a brake on the fade of memories (and the descent into oblivion). But they also inevitably distort reality through sensibility, the privileging of particular moments and the application of formal devices including blurring, cropping and scaling.

Colliding elements from various peripheral sites and from across time, the work describes a landscape alienated from the picturesque, forming a montage of sensation where the odd, the anecdotal and the texture of the world rub up against the texture of the artist's practice. An ecosystem of images then - perhaps closer to the concept of 'irreality' in that it depicts a subjective mutation of the world at odds with a generally agreed objectivity. The installation suggests an 'elegant mess of the mind', with an intuitive and personal logic driving meaning and free association through subtle, surreal fictions and at times illogical means.

These accumulated photographs are also a history of imagery that feeds into his painting practice - a catalogue and timeline of sources. We can trace an abstraction of phenomena giving way to a more tangible encounter with the observed world, whilst eschewing the narrative impulse - as in a glimpse. More recent images evoke small 'fictions' - ordering the minutia of the environment and drawing out anthropomorphic and other suggestive details. Through this evolution of form and subject *Suddenly Slowly* pictures the passage from cognition to capture to inquiry.

Andrew Browne is represented by Tolarno Galleries, Melbourne
www.andrewbrowne.com.au

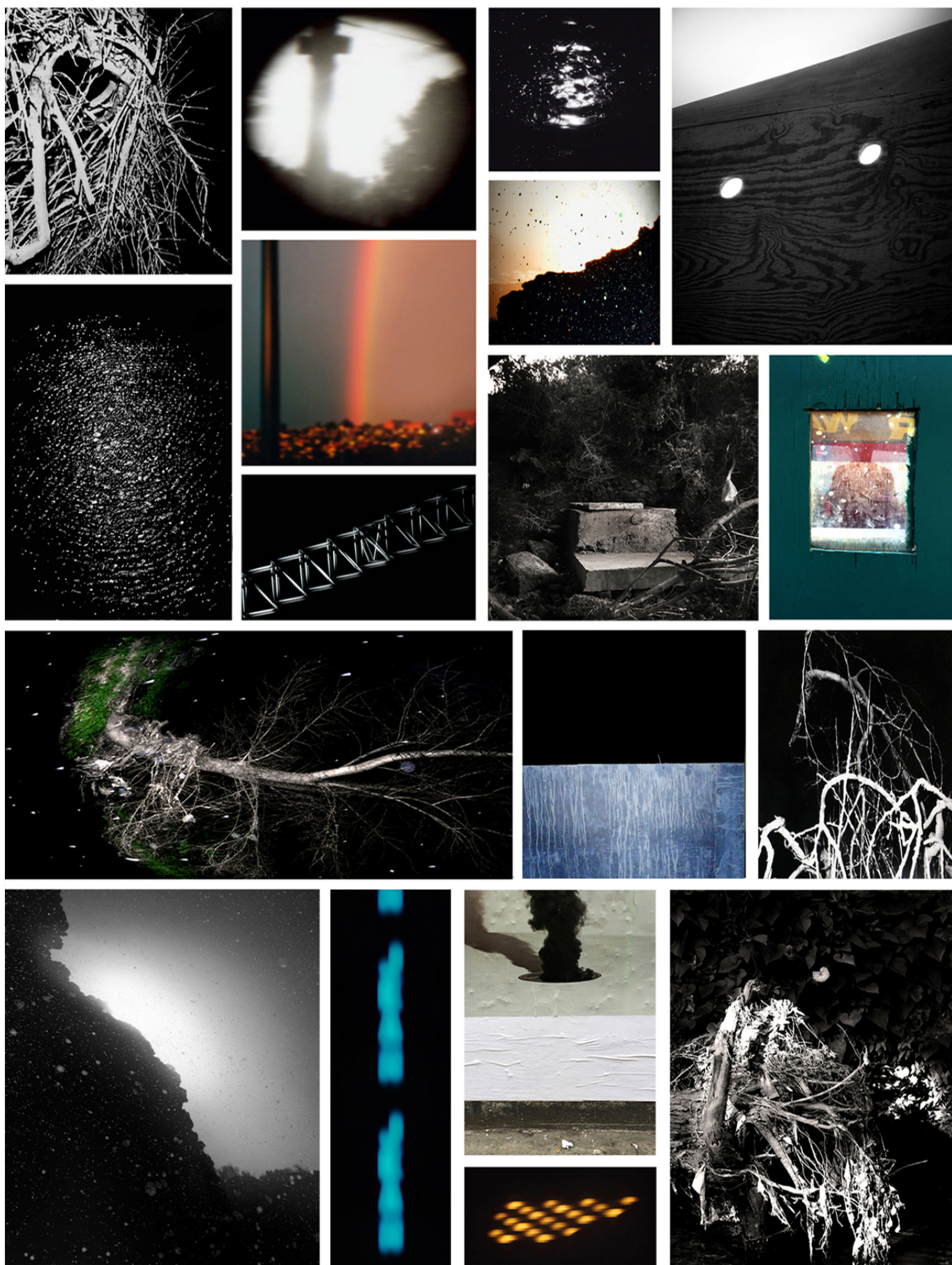
He would like to acknowledge: Chris Pennings @JCP Studios -
Rowan @Plakkit - Donald Holt - Ross Waterman - Brent Harris

SUDDENLY SLOWLY

Centre for Contemporary Photography, Melbourne

1 April - 22 May 2016





Photographs 1991 - 2016